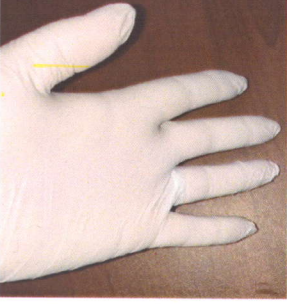


## **KABLO GEÇİŞ CONTASI MONTAJ TALİMATI**

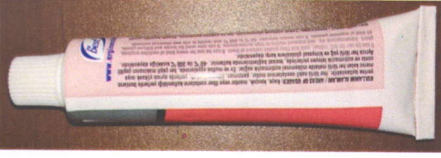
**SİPARİŞ KODU: PKGC**

**1. MONTAJ İŞLEMİNE BAŞLAMADAN ÖNCE, ÜRÜN İLE BİRLİKTE GELEN ELDİVENLERİ TAKINIZ.**



**2. ÜRÜN İLE BİRLİKTE GELEN SIVI CONTANIN, KAPAĞINI AÇARAK KULLANIMA HAZIR HALE GETİRİNİZ.**

**(ÇIPLAK EL İLE TEMASTAN KAÇININIZ)**



**3. SIVI CONTAYI, HER 2 PARÇANIN RESİM DE GÖRÜNEN, İÇ R3/1 VE DIŞ R3/2 YÜZEYLERİNE BİR FİLM TABAKASI OLUŞTURACAK ŞEKİLDE UYGULAYINIZ. RESİM R3/3 VE R3/4**

**R 3/1**

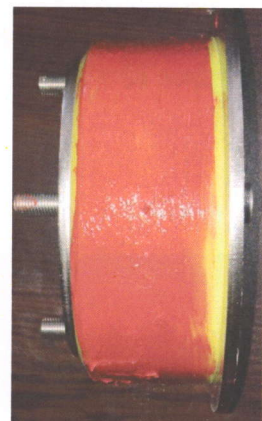
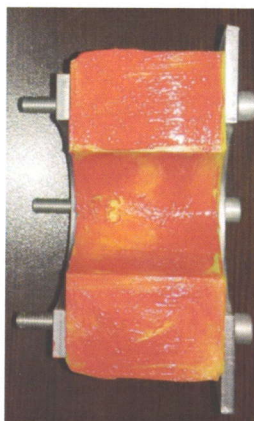
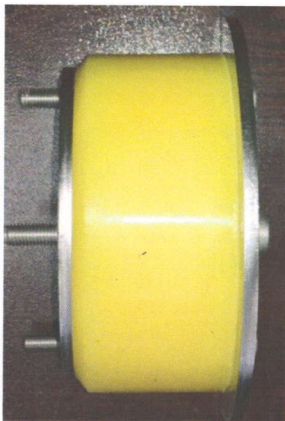
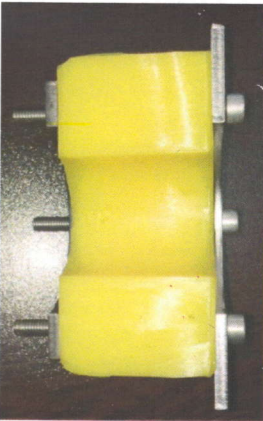
**R 3/2**

**R 3/3**

**R 3/4**

-----UYGULANACAK YÜZEYLER-----

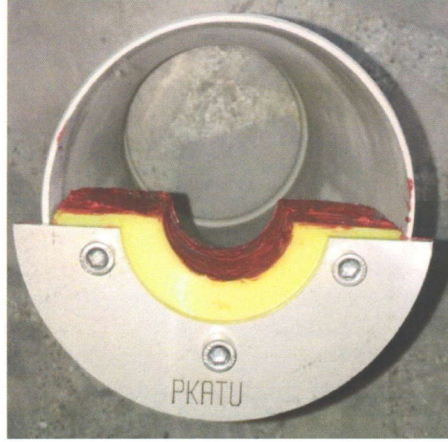
-----SIVI CONTA UYGULANMIŞ HALİ -----



**4. SIVI CONTAYI UYGULADIKTAN SONRA, 15 DK. KADAR BEKLEYİNİZ.**

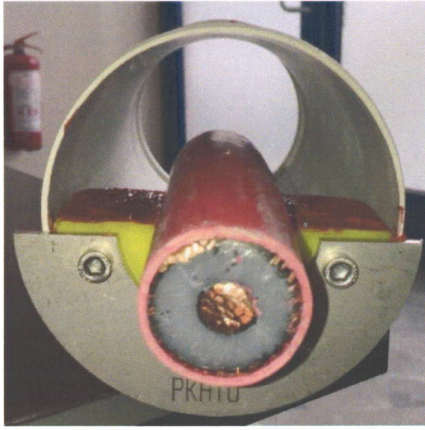
[www.pkatu.com.tr](http://www.pkatu.com.tr) / [pkatu@pkatu.com.tr](mailto:pkatu@pkatu.com.tr)

5. GEÇİŞ CONTASININ YARI PARÇASINI, GEÇİŞİN UÇ KISMINA RESİMDE Kİ GİBİ YERLEŞTİRİNİZ. **RESİM R5**

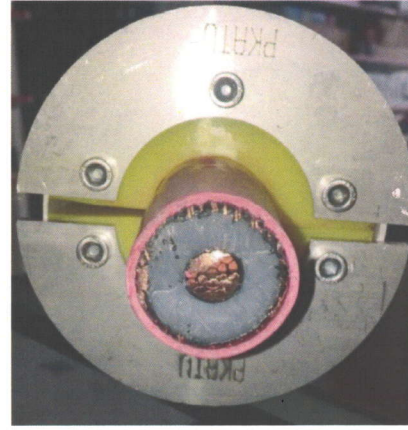


**R5**

6. KABLOYU ORTAYA YERLEŞTİRİP **RESİM 6/1**, GEÇİŞ CONTASININ DİĞER YARI PARÇASINI RESİMDEKİ (**RESİM R6/2**) GİBİ KOYARAK, İÇERİYE DOĞRU İTMEK SURETİYLE TAMAMEN OTURUNCAYA KADAR BASTIRINIZ.



**R6/1**

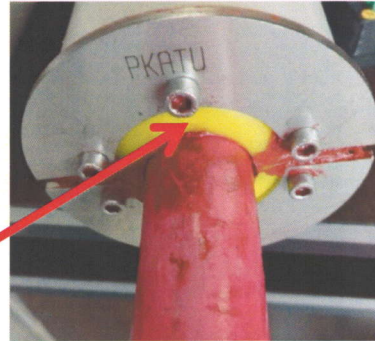


**R6/2**

7. SABİTLEME VİDALARINI (**IMBUS 5 NO**) ANAHTAR İLE **RESİM R7/1**, ORANTILI BİR ŞEKİLDE SIRAYLA VİDALARIN SIKIŞMA NOKTASINA KADAR SIKIN **RESİM R7/2**, TAM KURUMA SÜRECİ 24 SAATTİR, MONTAJ İŞLEMİ TAMAMLANMIŞTIR. **RESİM R7/2**



**R7/1**



**R7/2**



KODU	DIŞ ÖLÇÜ	İÇ ÖLÇÜ	DERİNLİK	KODU	DIŞ ÖLÇÜ	İÇ ÖLÇÜ	DERİNLİK
PKGC-1235	120mm	35mm	50mm	PKGC-1030	100mm	30mm	50mm
PKGC-1237	120mm	37mm	50mm	PKGC-1034	100mm	34mm	50mm
PKGC-1240	120mm	40mm	50mm	PKGC-1037	100mm	37mm	50mm
PKGC-1242	120mm	42mm	50mm	PKGC-1040	100mm	40mm	50mm
PKGC-1246	120mm	46mm	50mm	PKGC-1042	100mm	42mm	50mm
PKGC-1250	120mm	50mm	50mm	PKGC-1046	100mm	46mm	50mm
PKGC-1255	120mm	55mm	50mm	PKGC-1050	100mm	50mm	50mm
PKGC-1260	120mm	60mm	50mm	PKGC-1055	100mm	55mm	50mm
PKGC-1265	120mm	65mm	50mm	PKGC-1060	100mm	60mm	50mm
PKGC-1270	120mm	70mm	50mm	PKGC-1068	100mm	68mm	50mm
KODU	DIŞ ÖLÇÜ	İÇ ÖLÇÜ	DERİNLİK	KODU	DIŞ ÖLÇÜ	İÇ ÖLÇÜ	DERİNLİK
PKGC-730	70mm	30mm	50mm	PKGC-510	50mm	10mm	50mm
PKGC-734	70mm	34mm	50mm	PKGC-515	50mm	15mm	50mm
PKGC-737	70mm	37mm	50mm	PKGC-520	50mm	20mm	50mm
PKGC-740	70mm	40mm	50mm	PKGC-525	50mm	25mm	50mm
PKGC-742	70mm	42mm	50mm	PKGC-530	50mm	30mm	50mm
PKGC-750	70mm	50mm	50mm	PKGC-532	50mm	32mm	50mm
PKGC-755	70mm	55mm	50mm				